

# EXCELLENCE IN CONCRETE 2009 AWARDS

The Excellence in Concrete Awards are presented each year by the Concrete Promotional Group (CPG), to recognize outstanding work in concrete construction.

CPG is a non-profit trade association, representing the concrete industry in the Greater Kansas City area, promoting quality concrete construction.



Over 37, 000 cubic yards of concrete are in this newest iconic building in Kansas City's Skyline. This is an amazing structure. The Concert Hall is on the left and the Proscenium Theatre is on the right.

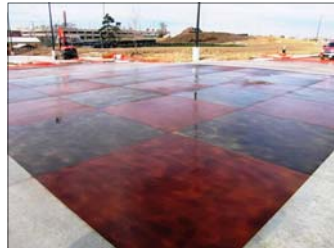
## The Judges Award Kauffman Performing Arts Center 1601 Broadway, KCMO

Kauffman Center for the Performing Arts, Inc.  
J.E. Dunn Construction Co., Inc.  
Moshe Safdie & Associates  
BNIM Architects  
Ove Arup & Partners  
Structural Engineering Associates  
RTE Technologies, Inc.  
Dun-Par Engineered Form Co.  
Lafarge A & C



### Commercial Flatwork MP Battalion Headquarters Ft. Leavenworth, KS

Army Corps of Engineers  
J.E. Dunn Construction Co., Inc.  
DLR Group  
GWH Architects  
Penny's Concrete, Inc.



### Decorative Commercial Plaza at the Speedway Kansas City, KS

Walmart Real Estate Bus. Trust  
Walton Construction  
Klover Architects  
Continental Consulting Engineers  
Miller Paving & Construction LLC  
Geiger Ready-Mix Co., Inc.



### Sustainable/Green J.E. Dunn Headquarters Kansas City, MO

J.E. Dunn Construction Co., Inc.  
BNIM/360 Architects  
Structural Engineering Associates  
Leigh & O'Kane  
Fordyce Concrete Company



### Paving DOT KDOT I-70 & I-435 Exchange #KA 1666-01, Kansas City, KS

Kansas Dept. of Transportation  
J.M. Fahey Construction Company  
Fordyce Concrete



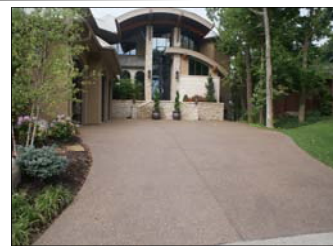
### Residential Flatwork Easley Residence Trimble, MO

Easley Family  
Dobberstine Custom Homes  
Kobush Concrete, Inc.  
Century Concrete, Inc.



### Removable Form Construction University of Kansas Boathouse, Lawrence, KS

The University of Kansas  
First Management  
Bob D. Campbell  
Treasor Architects  
Lithko Contracting, Inc.  
Penny's Concrete, Inc.



### Decorative Residential Silverstein Residence Lake Winnebago, MO

Silverstein Family  
Holthaus Buiding  
Bickford Company  
Apex Engineering  
Murray Concrete, Inc.  
Decorative Concrete Supply  
Geiger Ready-Mix Co., Inc.



### High Rise Construction Arrowhead Rakers Kansas City, MO

The Chiefs Football Club  
Baker Concrete Construction  
Walter P. Moore  
HOK  
Leigh & O'Kane  
CECO Concrete Construction  
Lafarge A & C

# CPG EXCELLENCE IN CONCRETE AWARDS 2009 CONTINUED...



**Commercial Floors**  
**Independence Events Center**  
**Independence, MO**

City of Independence, MO  
 Benham Companies  
 J.E. Dunn Construction Co., Inc.  
 Sink Combs Dethlefs  
 Martin/Martin, Inc.  
 Lafarge A & C



**Site Cast Tilt-Up**  
**Macy's Summit Fair**  
**Lee's Summit, MO**

Macy's Dept. Stores Inc.  
 S. M. Wilson & Co.  
 The Durrant Group  
 Lithko Contracting, Inc.  
 Geiger Ready-Mix Co., Inc.



**Concrete Parking Lot**  
**Evangel Temple**  
**Kansas City, MO**

Evangel Temple  
 Emery Sapp & Sons, Inc.  
 Lafarge A & C



**Municipal Paving**  
**39th Street Improvements**  
**Independence, MO**

City of Independence, MO  
 George Butler Associates  
 Emery Sapp & Sons, Inc.  
 Lafarge A & C



**Pervious Concrete**  
**Oregon Trail Parking Lot**  
**Olathe, KS**

City of Olathe, KS  
 Feyerherm Construction, Inc.  
 Shafer Kline & Warren  
 Nate Apple Concrete, Inc.  
 Penny's Concrete, Inc.



**Bridge**  
**MoDot Pryor Road Bridge**  
**Lee's Summit, MO**

City of Lee's Summit, MO  
 Missouri Dept. of Transportation  
 Pyramid Contractors, Inc.  
 Stark Construction  
 Fordyce Concrete Company



**Parking Garage**  
**K-State Parking Garage**  
**Manhattan, KS**

State of Kansas  
 Murray & Sons Construction Co., Inc.  
 The Ebert Mayo Design Group  
 AGA Consulting, Inc.  
 CECO Concrete Construction  
 Midwest Concrete Materials



**Structural Concrete**  
**UMKC Miller Nichols Library**  
**Addition, Kansas City, MO**

Univ. of Missouri, Kansas City  
 The Whiting-Turner Contracting Co.  
 Walter P. Moore  
 PGAV Architects  
 John Rohrer Contracting Co., Inc.  
 Lafarge A & C



**Concrete Restoration**  
**Lake Olathe Dam Stabilization**  
**Olathe, KS**

City of Olathe, KS,  
 John Rohrer Contracting Co., Inc.  
 ACI Concrete Placement  
 Lafarge A & C

CPG would like to recognize all the entries submitted to the awards program:

(No specific order)

- Bank of America KC Expansion
- Kauffman Stadium Renovations
- Topsy's Popcorn Zona Rosa
- Johnny's Tavern Power & Light
- Riverstone Apts.
- Pool Deck
- Overland Park Skate Park
- Bell Prairie Elementary
- Sand Storage
- De-Icing Facility
- Durso Patio
- Parkinsons Garage
- Galamba Outdoor Retreat
- Pierce Deck & Patio
- Private Gardens Residence
- Oread Hotel
- O'Reilly Distribution
- Warehouse
- Cosentino's
- Price Chopper, N. Ash
- Garrison Dental
- Parking Lot
- Summit Fair Retail Dev.
- N. Oak Trafficway Improvements
- KDOT Lone Elm Bridge
- Corbin Park Parking Lot
- Jo. Co. Adult Detention Center, Phase II
- Kauffman Stadium Renovations & Improvements