

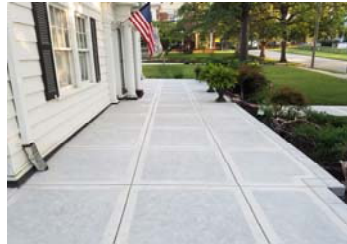
The Concrete Promotional Group

EXCELLENCE IN CONCRETE 2017 AWARDS



The Judges Award Olathe West High School

Olathe Unified School District
McCownGordon Construction
Musselman & Hall Contractors
Fordyce Concrete Co., Inc.
Lithko Contracting, Inc.
Penny's Concrete, Inc.
Needham DBS
Hollis + Miller Architects
Braun Intertec



Residential Flatwork
Bergman Residence
Leavenworth, KS

Bergman Family
Kersten Concrete Const. Co., LLC
Geiger Ready-Mix Co., Inc.



Bridge
Tudor Road/Bridge
Lee's Summit, MO

City of Lee's Summit, MO
Radmacher Bros. Excavating
Century Concrete Co., Inc.
Olsson Associates
KTI



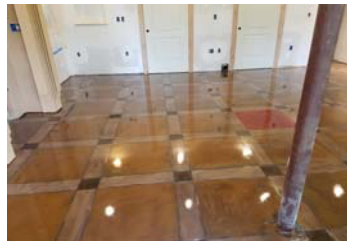
Multi Family
The Tudors at North Plaza
Kansas City, MO

Westland Industries LLC
Homoly Construction
Bottorff Construction
Penny's Concrete Inc.
Slaggie Architects
A.T. Renczarski & Company, Inc.
CFS Engineering



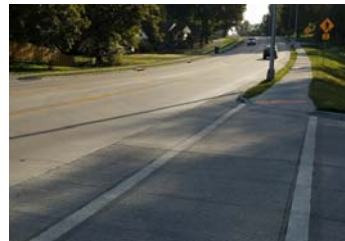
Parking Garage
KU Medical Parking Garage
Kansas City, KS

Univ. of Kansas Medical Center
J.E. Dunn Construction Co.
Fordyce Concrete Co., Inc.
BNIM Architects
Walker Parking Consultants
SK Design Group
CFS Engineers



Decorative Residential
Liber Residence
Liberty, MO

Liber Family
Concrete Designs
Wills Concrete Concepts



Paving/DOT
MoDOT Route 7
Harrisonville, MO

Missouri Dept. of Transportation
Miles Excavating, Inc.
Geiger Ready-Mix Co., Inc.
Geotechnology, Inc.



Polished Concrete
Crestview Elementary
Merriam, KS

Shawnee Mission School District
J.E. Dunn Construction Co.
George J. Shaw Construction
Fordyce Concrete Co., Inc.
ACI Boland Architects
Bob D. Campbell & Co.
Terracon



Decorative Commercial
City Place Courtyard
Overland Park, KS

Block Real Estate Services, LLC
Titan Built, LLC
Bedrock Concrete LLC
Geiger Ready-Mix Co., Inc.
NSPJ Architects
Bob D. Campbell & Co.



Countertop
Throener Residence
Kansas City, MO

Throener Family
Concrete Designs



Commercial Floors
Sioux Chief Headquarters
Kansas City, MO

Sioux Chief
Crossland Construction
Geiger Ready-Mix Co., Inc.
Needham DBS
KC Testing & Engineering, LLC



Concrete Home
Overland Park Home
Overland Park, KS

Jim Larson Homes
Shane Roach Conc. & Const. LLC
Century Concrete Co., Inc.



Municipal Paving
159th St. Nail Ave. to Mission Rd.
Overland Park, KS

City of Overland Park, KS
Miles Excavating, Inc.
Geiger Ready-Mix Co., Inc.
Kaw Valley Engineering, Inc.

CPG EXCELLENCE IN CONCRETE AWARDS 2017



**Restoration
New England Mosaic
Kansas City, MO**

New England Lofts, LLC
MTS Contracting
Concrete Designs



**Site Cast Tilt-Up
Lone Elm 515
Olathe, KS**

Van Trust Real Estate, LLC
Summit Concrete
Penny's Concrete, Inc.
GBA Architects Engineers
Terracon



**High Rise
KU Health Education Building
Kansas City, KS**

Univ. of Kansas Medical Center
McCownGordon Construction
George J. Shaw Construction
Talon Concrete & Aggregates
Helix Architecture + Design
Bob D. Campbell & Co.
PSI



**Low Rise
Dairy Farmers of America HQ
Kansas City, KS**

Dairy Farmers of America
J.E. Dunn Construction Co.
Fordyce Concrete Co., Inc.
HOK
Bob D. Campbell & Co.
Olsson Associates
KC Testing & Engineering, LLC



**Airports
Jo. Co. Executive Airport
Overland Park, KS**

Jo. Co. Airport Commission
J. M. Fahey Construction
Geiger Ready-Mix Co., Inc.
Burns & McDonnell
PSI



**Residential Foundation
Lake House
Lee's Summit, MO**

Robert Allen Construction
ABI Corporation, Inc.
Show Me Ready Mix LLC



**Architectural Detail
Ft. Leavenworth Regional
Simulation Center
Leavenworth, KS**

USACE
Carothers Construction
Baker Construction Inc.
Geiger Ready-Mix Co., Inc.
Jacobs Engineering Group
KTI



**Parking Lot
Sapp Bros.
Harrisonville, MO**

Sapp Bros.
JK Concrete Construction LLC
Century Concrete Co., Inc.
M.A.C. Corp.
Tompson, Dreesen & Dormer, Inc.



**Pervious Concrete
3 Trails Transit Center
Kansas City, MO**

KCATA
Gunter Construction Co.
Fordyce Concrete Co., Inc.
Taliaferro & Browne, Inc.



**Recreation
First Creek Farm
Smithville, MO**

Dan Carr
Fleshman Construction, Inc.
Geiger Ready-Mix Co., Inc.



**Entertainment Complex
Worlds of Fun
Entrance & Pavilions
Kansas City, MO**

Cedar Fair
Foreland Group, Inc.
Century Concrete Co., Inc.
GBA Builders LLC
GBA Architects & Engineers
Olsson Associates



**Water Treatment Plant
Parkville Water Treatment Plant
Parkville, MO**

Missouri-American Water Co.
Reynolds Construction
Kissick Construction Co.
Geiger Ready-Mix Co., Inc.
Black & Veatch
Harris Davis Rebar
TSI



The Concrete Promotional Group 15700 College Blvd., Suite 103, Lenexa, KS 66219
913-341-5800, www.concretepromotion.com