

EXCELLENCE IN CONCRETE 2010 AWARDS

The Excellence in Concrete Awards are presented each year by the Concrete Promotional Group (CPG), to recognize outstanding work in concrete construction.

CPG is a non-profit trade association, representing the concrete industry in the Greater Kansas City area, promoting quality concrete construction.



Over 30,000 cubic yards of concrete were placed for the kcICON project, ranging from drilled shafts 300 feet down into limestone bedrock, to footings, pylons, bridge deck, precast panels and approaches.

Judges Award Christopher S. Bond Bridge kcICON Project

Missouri Dept. of Transportation
Paseo Corridor Constructors
Parsons Corporation
DodStone Group
Fordyce Concrete Co., Inc.
Hunt Martin Materials, LLC



Commercial Flatwork Leavenworth High School Athletic Stadium

Leavenworth USD #453
J.E. Dunn Construction Co., Inc.
Kaaz Construction Co.
HTK Architects, P.A.
Geiger Ready-Mix Co., Inc.
Terracon Consultants, Inc.



Pervious Pavement KCATA Troost MAX Bus Improvements

KC Area Transit Authority
Musselman & Hall Contractors
Lafarge A & C
KTI Technologies



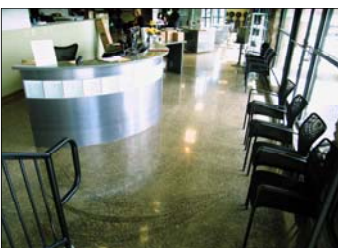
Decorative Residential Yazdani Residence

Yazdani Family
J.R. Construction & Remodeling
Geiger Ready-Mix Co., Inc.



Shotcrete JC Penney Fire Retention Pond Restoration

J.C. Penney Co., Inc.
John Rohrer Contracting Co.
Norton & Schmidt Consulting
Engineers
Fordyce Concrete Co., Inc.



Polished Floors House of Heavilin Beauty School

House of Heavilin Beauty School
Beacon Contracting, LLC
Double K, LLC
Tholen Wolfe Contractors, Inc.
Geiger Ready-Mix Co., Inc.



Midrise Building Kansas City Baptist Temple

Kansas City Baptist Temple
Pearce Construction Co.
Bob D. Campbell & Co.
Mandel Teter
Intec Construction Co.
Musselman & Hall Contractors
Lafarge A & C



Commercial Decorative Sheraton Hotel Outdoor Patio

Sheraton Hotel, Overland Park, KS
City of Overland Park, KS
Strickland Construction
Artistic Concrete Surfaces
Webb Throckmorton Associates
Decorative Concrete Supply
Geiger Ready-Mix Co., Inc.



Site Cast Tilt-Up Sycamore Hills Baptist Church

Sycamore Hills Baptist Church
Teamway Builders
Summit Concrete
MKEC Eng. Consultants, Inc.
GLMV Architecture, Inc.
Quicksilver Ready Mix
Kaw Valley Engineering, Inc.

CPG EXCELLENCE IN CONCRETE AWARDS 2010 CONTINUED...



**Recreation Project
Overland Park, KS
Skate Park**

City of Overland Park, KS
Kings Construction Co., Inc.
Permanent Paving, Inc.
Haake Foundations, Inc.
DLR Group
CHA Sports LLP
Geiger Ready-Mix Co., Inc.



**Structural Aesthetics
Cerner LS-V
Improvements**

Cerner Corporation
McCown Gordon Construction, LLC
BURR Computer Environments, Inc.
John Rohrer Contracting Co.
Bob D. Campbell & Co.
Herman A. Scharhag
Fordyce Concrete Co., Inc.
PSI, Inc.



**Concrete Restoration
Old Hwy 56
Bridge Rehabilitation**

City of Olathe, KS
Bryan-Ohlmeier Construction, Inc.
GBA Architects & Engineers
Geiger Ready-Mix Co., Inc.



**Parking Lots
Federal Express**

Federal Express Corporation
Musselman & Hall Contractors
Lafarge A & C



**Concrete Building
Bradken Gamma
Ray Building**

Bradken
Free Country Design & Construction, Inc.
Bottorff Construction
Ellison-Auxier Architects, Inc.
Geiger Ready-Mix Co., Inc.
Alpha-Omega Geotech, Inc.



**Paving DOT
Hwy 350 & I-470
Paving & Bridges**

MoDOT
Pyramid Contractors, Inc.
Realm Construction, Inc.
Fordyce Concrete Co., Inc.
Hunt Martin Materials, LLC



**Wastewater Treatment
Harrisonville Wastewater
Treatment Expansion**

City of Harrisonville, MO
David E. Ross Construction
Burns & McDonnell
Geiger Ready-Mix Co., Inc.
KTI Technologies



**Airport Paving
Wheeler Airport Runway 1/19
Safety Area**

Kansas City Aviation Dept.
Ideker Inc.
HNTB
Realm Construction, Inc.
Lafarge A & C



**Concrete Bridges
Mission Lane
Bridge Replacement**

City of Prairie Village, KS
Bryan-Ohlmeier Construction Co. Inc.
Coreslab Structures (MO) Inc.
GBA Architects & Engineers
Geiger Ready-Mix Co., Inc.
PSI, Inc.



**Parking Garages
Wellmark
Parking Garage**

Wellmark Blue Cross Blue Shield
The Weitz Construction Company
CECO Concrete Construction, LLC
HOK
CTI Ready Mix



**Overall Concrete Award
Kansas City Zoo Polar Bear Exhibit**

The Kansas City Zoo
City of Kansas City, MO Park & Rec.
Barsto Construction, Inc.
Intec Construction, Inc.
Musselman & Hall Contractors
Leigh & O'Kane, LLC
Peckham Guyton Albers & Viets, Inc.
Patti Banks Associates
SK Design Group
Lafarge A & C
Fordyce Concrete Co., Inc.

Congratulations to these winners and all projects submitted for review in the 2010 Excellence in Concrete Awards Program.



Concrete Promotional Group,
10707 Barkley, Suite A,
Overland Park, KS 66211
913-341-5800